



EXPERIENCE THE DIFFERENCE  
YOUR SECURITY & SAFETY PRODUCTS

RAPID DEPLOYMENT SOLUTION  
**PROTECTIVE SHELTERS**  
INFLATABLE AIRTIGHT HANGARS



# H20

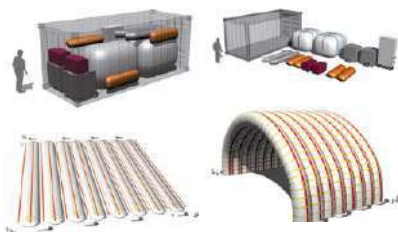
**AN AIR-TIGHT, ULTRALIGHTWEIGHT, MODULAR AND EXPANDABLE ,  
EASY TO TRANSPORT, TO SET UP, TO MAINTAIN AND TO MOVE SHELTER**



- 20 meters span structure/s
- Expandable in modules of 9 meters
- Total covered surface 1,840 square meters



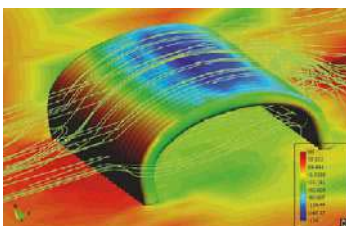
**PORTABLE:** easy and fast to transport and deploy.



**MODULAR:** easily extensible and secure behaviour on operations.



**SAFE:** guaranteed by a specialized engineering team.



**SHALLOW FOUNDATION:** low cost anchorage systems for any terrain.





**COST-EFFICIENT:** compared with other structural typologies:  
**Excellent ratio Durability/Price.**  
**Reduced maintenance:** Tech Support Program can be adapted to every customer specific operation.

**Lower price** than alternative solutions, considering our total solution price, our high resistance to external loads (wind, snow, etc.).

**SMART CONTROL SYSTEM (SCS):** real-time tracking of all parameters by mobile and laptop.



**AIR-TIGHT:** manufacturing of the inflatable tubes without air losses.



**NO ENERGY CONSUMPTION FOR OPERATION:** pressure inside the tubes controlled by electro-valves.



Eco-Friendly solutions with a very low carbon footprint.