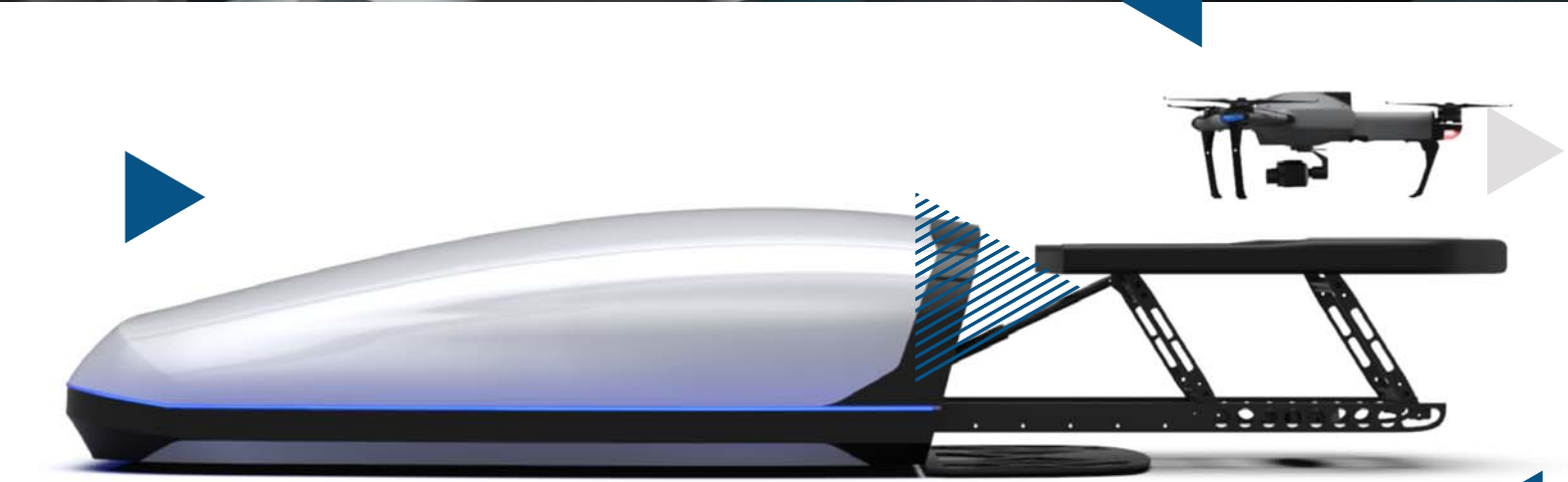


# **C4i** *communication*

EXPERIENCE THE DIFFERENCE  
YOUR SECURITY & SAFETY PRODUCTS

## **C4D-CSPPro** DRONE CHARGING STATION FOR AUTOMATED DRONE OPERATIONS





## Fully automated C4D-CSPro Operation

The C4I Communication is a proprietary hub specially designed for the C4D-CSPro UAS, enabling 24/7 drone readiness and fully automated operation with automated take-off, landing, battery replacement, and pre-planned missions. Our C4I SDK allows you to configure our user-friendly software to extend functionality to other open standards and legacy systems, meaning integration is painless, quick, and inexpensive.

- Precisely landing on an unbelievably small platform has just become the new normal.
- Automatic Battery replacement and readiness to take-off again in less than 3 minutes
- When time is of the essence, having a drone ready to launch at a moments notice is key.



## Increase your productivity

With the touch of a button it is simple to define a perimeter security mission and schedule times for deployment of routine security tasks. The Pros fly automatically according to your predefined plan and alerts the operator or C4I station only when it recognizes a predefined threat. No setup, no battery charging or replacement and no time spent carefully piloting the Pro through landings or take offs. You can focus on other more important tasks, and let the C4I Communication take care of your security



**Deploy without leaving office**

Wireless and wired options allow you to connect to the C4I network



**Simple to use desktop software**

The same simple software brought to the tips of your fingers at your desk.



**Integration with your current platform**

can be easily integrated to different legacy C4I systems using the C4ISDK



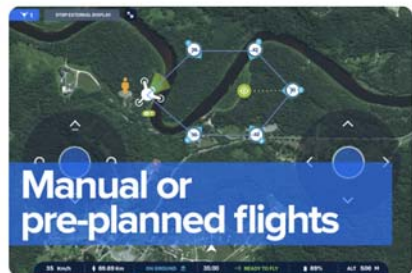
**Up to 8km mission operations**

Long missions allow you to check your entire facility perimeter.



**Dock station & aircraft monitoring**

Checking the status of your aircraft 24/7 is simple with the C4I Communication user interface.



**Manual or pre-planned flights**

Use Pre planned automated missions are key for 24/7 operation, but manual operation is of course optional and an operator can take back control immediately at any time.





## Full protection to your C4D-CSPro

More than just a landing pad, the C4I Communication offers protection from the elements, is weather resistant, charges the additional batteries and monitors the readiness condition of your aircraft. Any changes in status will be immediately alerted to the pilot in command on the desktop.



Battery performance is improved by automated cooling/heating systems.



Work cannot stop just because of a little rain, or even a lot. C4D-CSPro is weatherproof.



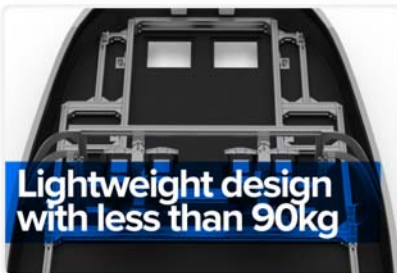
Tough under pressure, the C4I Communication stands strong even under heavy snow.





## Place it anywhere

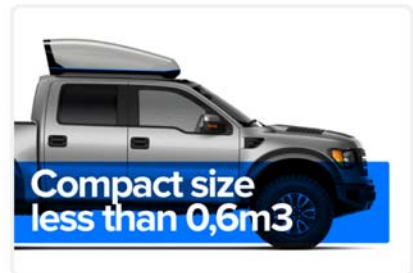
Size and weight of operational technology is critical. The C4I Communication is light enough that it can be lifted by two people and has a footprint that will easily fit into a van, enabling it to be concealed if required, and easily.



Easily carried by two people, the C4I Communication can be moved and placed wherever it is needed.



Connection to the network can be done wirelessly and is fully AES encrypted.



Variety of mobilised applications open up with a form factor so small.





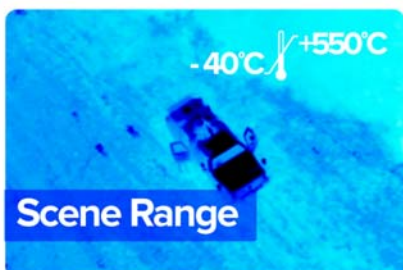
# PAYLOAD C4X

## Accure temperature measurements



### LWIR THERMAL IMAGING CAMERA

High-sensitivity (50mK) thermal camera, imaging at **640X512** or **336X240** with **30FPS** or **9FPS**. Accurate temperature measurements ideal for analytics and telemetry with any light condition.



**Scene Range**

Wide temperature visualisation range, between -40°C till 500°C.



**Sensor 17um size**

Compact pixel size...



**Framerate (9 to 30)Hz**

Bandwidth transmission influence with low or standard frame capture.



**Hot Spot Detection**

Thermal feed to the ground station for hot spot reading and detection.



**Storage up to 64GB**

Record and storage mission videos and imagery with an SD card.



**Touch measurement**

One touch on-screen temperature spot measurement.

# PAYLOAD C4M10

Reliable image capture



## FULLHD 10X OPTICAL ZOOM CAMERA

Small aerial camera with **optical zoom** up to **10x** and **digital zoom** up to **2x**. The Argus M10 offers unparalleled image data capture with an ultra high-quality sensor, **1920x1080** resolution **60fps** and **11Mbps**.



High frame capture streaming for live mission operations.



Images with more details over long distances. Optical zoom up to 10x.



Record and storage mission videos and imagery with an SD card.



LEARN MORE: [c4communication.com](http://c4communication.com)

FOR MORE INFORMATION: [contact@c4communication.com](mailto:contact@c4communication.com) or +1 (302)981.1340