



ARMORED RESCUE CRANE VEHICLE

contact@C4communication.com / www.C4communication.com

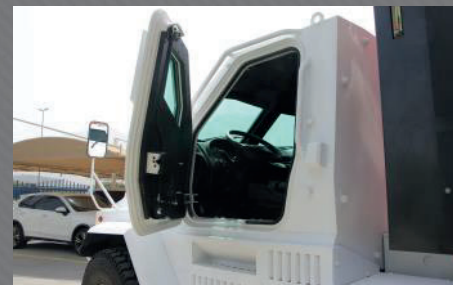


Features

- Powertrain - turbocharged inline 6 cylinders (diesel) engine producing 380HP @ 1500-1900rpm & torque 1900Nm @ 1000-1435rpm
- Heavy duty automatised transmission
- 4x4 & 6x6 drivetrain available
- Available in both 12V and 24V electrical systems
- Heavy duty suspension and brake systems
- Armored driver cabin with rear installed crane to lift up to 13,000kg (28,600lbs) weight
- Rear storage box for tools & equipment
- Front & rear tow hooks
- Seating capacity: 2 military grade certified blast attenuation seats

Armoring Specifications

- Opaque and transparent armor up to STANAG 4569 Level 3
- V-Hull Shaped floor for blast protection up to STANAG 4569 Level 3a & 3b
- High payload tires & wheels equipped with run-flat inserts, can be outfitted with an optional semi-automatic central tire inflation system (CTIS)



Bureau des États-Unis
 2915 Oglethorpe road #1072
 Newark, DE 19713 U.S.A
 Tél: +1 (302) 981 1340
 Fax: +1 (302) 380 3694



Bureau Maroc
 219 Boulevard Zerkoutni
 BP 5277 – BAM Maârif
 20330 Casablanca –Maroc
 Tél: +212 (0)5 22 99 16 93
 Fax: +212 (0)5 22 98 38 27

