

C4i **communication**

EXPERIENCE THE DIFFERENCE
YOUR SECURITY & SAFETY PRODUCTS

C4IWAVE S15-R INLAND RIVER NAVIGATION SURVEILLANCE RADAR



LEARN MORE:

<http://c4communication.com>

Inland River Navigation Surveillance Radar



C4iwave S15-R is a Ku-band PD radar specially used in inland river Navigation surveillance . It has the ability to perform large-area , long-lasting , high-density search and monitoring of inland river targets and instantaneous multi-target tracking . It uses a customized AI algorithm, not only It can monitor and classify large , medium and small ships on the river, and can effectively warn low-altitude drone intrusion . It has many advantages such as high detection accuracy , wide coverage , high installation flexibility , all-day and all-weather work.

AI intelligence

Electronic phase scanning, autonomous positioning and orientation, ground and low-altitude target classification, excellent ground clutter suppression signal processing algorithm

Environmental adaptability

Fully sealed design, excellent performance such as wind resistance, salt spray resistance, rain resistance, damp heat resistance, high reliability, and maintenance-free

Small target detection

Phased array rapid scanning, high data refresh rate, minimum detection speed 0.2m/s, effective identification and detection of low, small and slow targets

Easy to deploy

Using Ethernet communication interface, integrated design, easy to deploy, simple to configure, and easy to operate

Multi-target processing

Active phased array system, with 0~256 batches of multi-target tracking capabilities (optional processor to enhance target tracking capabilities)

Integration

It can be installed separately or integrated with multiple devices, supporting compatibility to various security monitoring platforms and alarm platforms

High precision

Distance accuracy is 3m, distance resolution is 10m; angle measurement accuracy is 0.5°, azimuth resolution is 3°

Expansibility

Support 360° scanning & detection by using multi-array mode or rotary table

APPLICATION SCENARIOS



Far Detection Distance,
Filling Blind Area



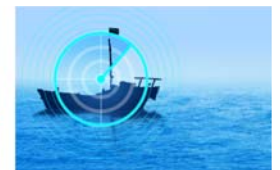
Keep Track of
Near-Surface Targets
After Landing



Monitoring Moving
Boat Targets,
Aided Navigation



Protecting rare
marine animals,
Prevent poaching



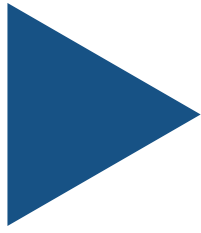
To Prevent Illegal Boat,
Poaching and Smuggling



TECHNICAL DATE

Product type		C4iwave S15-R
Operating Frequency		Ku
Power Transmitted		10W
Azimuth Range		±45°
Pitch Range		8° (machinery ±10°, adjustable)
Velocity Measurement Range		0.2m/s-80m/s (radial direction)
Min.Operating Distance		90m
Distance Precision		3m
Azimuth Angular Precision		0.5°
Typical Target Detection Range	UAV (RCS 0.01m ²)	1.5km
	Walking person (RCS 0.5m ²)	2km
	Small vessel (RCS 4m ²)	10km
	Middle vessel (RCS 20m ²)	15km
Velocity Resolution		0.2m/s
Distance Resolution		10m
Azimuth resolution		3°
Data Refreshing Rate		>10Hz
Power Supply		AC 220V±22V, 50Hz±5Hz Storage battery: DC24V±2.4V
Overall Power Consumption		<130W
Dimension		575mm×282mm×84.5mm
Weight		15kg
Ingress protection		IP66
Communication Interface		Network interface
Operating Temperature Range		-40°C~+65°C





LEARN MORE: c4icommunication.com

FOR MORE INFORMATION: contact@c4icommunication.com or +1 (302)9811340