

C4i **communication**

EXPERIENCE THE DIFFERENCE
YOUR SECURITY & SAFETY PRODUCTS

C4IWAVE S30-C COASTAL & MARITIME SURVEILLANCE RADAR



LEARN MORE:

<http://c4communication.com>



Coastal & Maritime Surveillance Radar

C4iwave S30-C is a Ku-band pulse doppler radar special ly used in coastal and maritime surveillance . It has the ability to perform large-area , long-lasting , high-density search and monitoring of marine targets and instantaneous multi-target tracking . It uses a customized AI algorithm, not on ly It can monitor and classify large , medium and small ships in the sea, and can effectively warn low-altitude drone intrusion . It has many advantages such as high detection accuracy , wide coverage , high installation flexibility , all-day and all-weather work.

AI intelligence

Electronic phase scanning, autonomous positioning and orientation, ground and low-altitude target classification, excellent ground clutter suppression signal processing algorithm

Environmental adaptability

Fully sealed design, excellent performance such as wind resistance, salt spray resistance, rain resistance, damp heat resistance, high reliability, and maintenance-free

Small target detection

Phased array rapid scanning, high data refresh rate, minimum detection speed 0.2m/s, effective identification and detection of low, small and slow targets

Easy to deploy

Using Ethernet communication interface, integrated design, easy to deploy, simple to configure, and easy to operate

Multi-target processing

Active phased array system, with 0~256 batches of multi-target tracking capabilities (optional processor to enhance target tracking capabilities)

Integration

It can be installed separately or integrated with multiple devices, supporting compatibility to various security monitoring platforms and alarm platforms

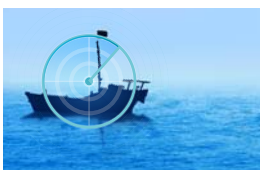
High precision

Distance accuracy is 3m, distance resolution is 10m; angle measurement accuracy is 0.3°, azimuth resolution is 3°

Expansibility

Support 360° scanning & detection by using multi-array mode or rotary table

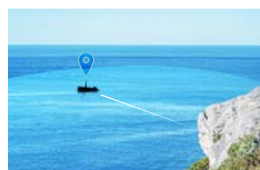
APPLICATION SCENARIOS



Track suspicious ships,
Strictly prevent
smuggling at sea



Protecting rare marine
animals,
Prevent poaching



Monitor key ships,
Combating Drug
Smuggling and Traffick
ing



Suspicious vessel
intrusion warning ,
Protect important
maritime infrastructure



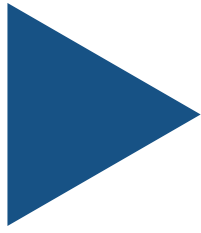
Suspicious vessel
approaching warning,
Prevent and
control terrorists



TECHNICAL DATE

Product type		C4iwave S30-C
Operating Frequency		Ku
Power Transmitted		10W
Azimuth Range		±45°
Pitch Range		8° (machinery ±10°, adjustable)
Velocity Measurement Range		0.2m/s-80m/s (radial direction)
Min.Operating Distance		90m
Distance Precision		3m
Azimuth Angular Precision		0.3° or 0.5°(optional)
Typical Target Detection Range	UAV (RCS 0.01m ²)	3km
	Walking person (RCS 0.5m ²)	7km
	Small vessel (RCS 4m ²)	15km
	Middle vessel (RCS 20m ²)	20km
	Big vessel (RCS 50m ²)	30km (optional processor)
Velocity Resolution		0.2m/s
Distance Resolution		10m
Azimuth resolution		3°
Data Refreshing Rate		>10Hz
Power Supply		AC 220V±22V, 50Hz±5Hz Storage battery: DC24V±2.4V
Overall Power Consumption		<130W
Dimension		575mm×282mm×84.5mm
Weight		15kg
Ingress protection		IP66
Communication Interface		Network interface
Operating Temperature Range		-40°C~+65°C





LEARN MORE: c4icommunication.com

FOR MORE INFORMATION: contact@c4icommunication.com or +1 (302)9811340