

C4i *communication*

EXPERIENCE THE DIFFERENCE
YOUR SECURITY & SAFETY PRODUCTS

C4I-THERMOTX THERMAL SIGHT



LEARN MORE:

<http://c4icommunication.com>

Defence & Security, Law enforcement

C4I-Thermo TX thermal imaging sight is specially designed for the military and law enforcements sniper teams for medium- and long-range target shooting. It is equipped with various features for ballistic corrections and exchangeable reticle designs.

It is shockproof to all heavy calibre rifles such as .338 Lapua Magnum and .50 BMG.



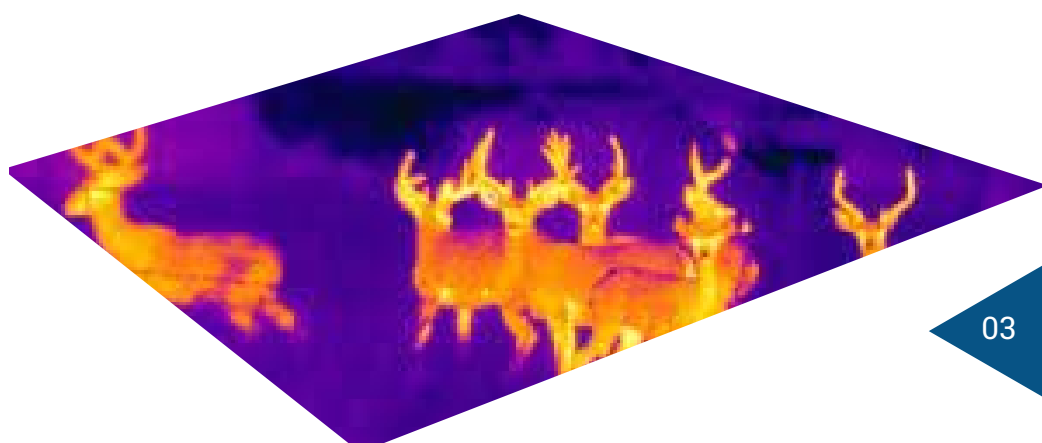
C4I-Thermo TX thermal imaging sight can serve the following tasks:

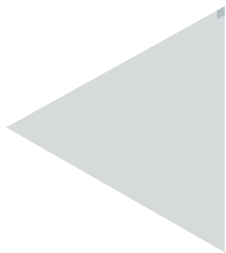
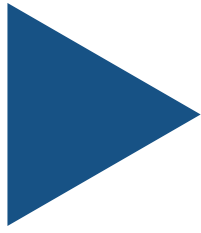
- Target acquisition;
- Fire control;
- Tactical and strategical surveillance;
- Field reconnaissance





| | TECHNICAL CHARACTERISTICS | C4I-THERMO TX |
|---|--------------------------------|---|
| FOCAL PLANE ARRAY | Type | Microbolometer |
| | Pixel Count (Resolution) | 640x480 |
| | Pitch size | 17 μm |
| | Spectral Response | 8 ÷ 14 μm |
| | Thermal Sensitivity (NETD) | < 50 mK @ F/1.0 |
| THERMAL IMAGING PERFORMANCE | Brightness / Contrast | Automatic / Advanced Image Processing |
| | Image Polarity | User Selectable White Hot / Black Hot |
| | Menu | OSD |
| | Reticle | 5 reticle types |
| | Zeroing | 5 zeroing positions |
| | IFOV | 0.22 mRad |
| | NUC | Automatic / Manual |
| OPTICS * Given values are nominal. Actual values could be within ±5% tolerance | Focal Length of Objective Lens | 75 mm |
| | F/# | 1.2 |
| | Focus | Manual |
| | FOV | 8.2°(H) X 6.2°(V) |
| | Eye relief | 60mm |
| | Diopter adjustment | -4 to +3 dpt. |
| VIDEO | Analog Video Output Format | CCIR (PAL) or RS-170 (NTSC) |
| | Display Type | OLED 800x600 |
| | Digital zoom | x2, x4 |
| POWER | Power Source | 2x or 4x 18650 Li Ion rechargeable batteries |
| | Operating time | ~ 6 Hours Continuous @ 25°C with 2x 18650 Li Ion rechargeable batteries. ~ 12 Hours Continuous @ 25°C with 4x 18650 Li Ion rechargeable batteries. |
| STATIC RANGE PERFORMANCE *NOTE: The distances defined are calculated in geometrical values only human (1.8x0.5m), vehicle (2.3x2.3m), not accounting the atmospheric conditions. | Human Detection Range* | >2000m |
| | Human Recognition Range* | >690m |
| | Vehicle Detection Range* | >5000m |
| | Vehicle Recognition Range* | >1600m |
| ENVIRONMENTAL CHARACTERISTICS *Environmental tests are according to MIL-STD-810G | Operating Temperature Range | -30°C to +50°C |
| | Storage Temperature Range | -50°C to +60°C |
| | IP Protection rating | IP 66/IP 67 optional |
| PHYSICAL CHARACTERISTICS | Weight without batteries | <1300g |





LEARN MORE: c4icommunication.com

FOR MORE INFORMATION: contact@c4icommunication.com or +1 (302)9811340