



EXPERIENCE THE DIFFERENCE
YOUR SECURITY & SAFETY PRODUCTS

THERMAL IMAGERS AND NIGHT VISION PRODUCTS

CATALOG





THERMAL IMAGERS AND NIGHT VISION PRODUCTS

C4I SERIES THERMAL IMAGERS AND NIGHT VISION GOGGLES

1 C4I-C



2 C4I-C PRO



3 C4I-FM



4 C4I-FB



5 C4I-ML



6 C4I-MU



7 C4I-14



8 C4I-31



9 C4I-31H



10 C4I-7



11 C4I-9



C4I SERIES INFRARED BINOCULARS AND LASER RANGEFINDER

1 C4I-BHF



2 C4I-BHS



3 C4I-BE PRO



4 C4I-X



5 C4I-BASE



C4I SERIES SIGHTS

1 C4I-IS



2 C4I-X



3 C4I-CM



4 C4I-CH



5 C4I-TS



6 C4I-TR



VEHICLE INTEGRATED OPTOELECTRONICS SERIES SIGHTS

1 C4I B



2 C4I BF



3 C4I J



4 C4I-6CH AI BOX



5 C4I DISPLAY





C4I SERIES

C4I SERIES THERMAL IMAGERS AND NIGHT VISION GOGGLES

ENHANCED THERMAL IMAGERS

1 C4I-C
CLIP-ON THERMAL
IMAGER



2 C4I-C PRO
CLIP-ON THERMAL
IMAGER



3 C4I-FM
ENHANCED
NIGHTVISION GOGGLE



4 C4I-FB
ENHANCED NIGHT VISION
BINOCULAR GOGGLES



THERMAL IMAGERS

1 C4I-ML
MULTI-FUNCTIONAL
THERMAL MONOCULAR



2 C4I-MU
MULTI-FUNCTIONAL
THERMAL MONOCULAR



NIGHT VISION GOGGLE

1 C4I-14
MONOCULAR NIGHT
VISION GOGGLE



2 C4I-31
BINOCULAR NIGHT
VISION GOGGLES



3 C4I-31H
BINOCULAR NIGHT
VISION GOGGLES



4 C4I-7
BINOCULAR NIGHT
VISION GOGGLES



5 C4I-9
BINOCULAR NIGHT
VISION GOGGLES





C4I-14

MONOCULAR NIGHT VISION GOGGLE

The C4I-14 Monocular Night Vision Goggles is equipped with 2+ Generation image intensifier tubes to enhance the detection and recognition of targets at night. The housing is made of composite polymer materials, ensuring stable performance and comfortable wear. It includes auto standby mode to extend the device's battery life.



- LIGHTWEIGHT AND PORTABLE**
- IR ILLUMINATOR**
- MANUAL GAIN**
- INTERCHANGEABLE LEFT AND RIGHT EYES**
- 10M WATER RESISTANCE**

TECHNICAL DATA

Magnification, x 1
Exit Pupil Distance, mm 25
mm Adjustment, D -4 ~ +2
I² Resolution, Lp/mm 64
FOM Optional
FOV, ° 40

Lens System, mm 25
Range of Focus, mm 250~∞
Brightness Control Yes
Bright Source Yes
Protection Infrared Yes
Illuminator 10m
Immersion

Battery Type AA×1
Battery Life, h 55
Dimensions, mm 96×57×69
Weight, g 255



Night Vision Mode



C4I-7 BINOCULAR NIGHT VISION GOGGLES

The C4I-7 incorporates the modular design of binocular system with single image intensifier tube for effortless image tube replacement and maintenance, compatible with various image tube models. Crafted from lightweight PEEK composite material, the device features adjustable IPD to meeting diverse user needs and providing an optimal user experience.



**LIGHTWEIGHT
AND
PORTABLE**



**MODULAR
DESIGN**



IP67



**ADJUSTABLE
IPD**

TECHNICAL DATA

Magnification, X(optional)	3/5	Lens System Range	25mm F1.18	Immersion	IP67
Exit Pupil Distance, mm	25	of Focus, mm Bright	250 ~∞	Battery Type	AA(2)
Adjustment, D	-5 +5	source protection	Yes	Battery Life, h	50
I² Resolution, Lp/mm	64	Infrared Illuminato	Yes	Dimensions, mm	130×130×56
FOM	1600	IR Indicator	YES	Weight, g	450
FOV, °	42+/-3	Low Battery Indicator	YES		



Night Vision Mode



C4I-9 BINOCULAR NIGHT VISION GOGGLES

As the standard night flight equipment for Air Force and Navy aircrews, the C4I-9 provides clear night vision images, enhancing the safety and efficiency of nighttime flights.

Class B NVIS Compatibility and fully compatible with the aircraft's night vision lighting system; High-performance optical suite for impressive low-light resolving capabilities



EMC
(RE102 &
RE103)



WIDE RANGE
ADJUSTMENT
COMPATIBILITY



LIGHTWEIGHT



ANVIS
AVIATION
INTERFACE

TECHNICAL DATA

Magnification, x	1	Pupillary Distance	52-72	Weight, g	510 (main unit), 75 (bracket), 200 (battery holder)
Eye Relief, mm	25	Adjustment, mm		Adjustment Range	
Visual Acuity	-6/+2	FOV, °	40±2	Vertical, mm	±11
Focal Length of Objective Lens, mm	27	Resolution, Tube	1800 P43/P45	Horizontal, mm	±12
Objective Lens Film Layer	Class B Aviation Film Layer	Power Supply	Rear battery holder (2×18650)	Pitch, °	±5
Operating Distance	250 m to infinity	Operating Time, h	60		
		Dimensions, mm	108×106×90		



C4I-31

BINOCULAR NIGHT VISION GOGGLES

The C4I-31 Binocular Night Vision Goggles, featuring 2+ Generation image intensifier tubes, notably improve the detection and recognition of targets in complex environment. The compact design of the device weighs only 500g, alleviates the burden on users' heads during operation. Optional battery packs are available for selection.



- 1 LIGHTWEIGHT AND PORTABLE
- 2 IR ILLUMINATOR
- 3 MANUAL GAIN
- 4 POWER-OFF BY FLIPPING
- 5 10M WATER RESISTANCE

TECHNICAL DATA

Magnification, × Exit **1**
Pupil Distance, mm **25**
Adjustment, D I² **-4~+2**
Resolution, Lp/mm **64**
FOM **Optional**
FOV, ° **40**

Lens System, mm **25**
Range of Focus, mm **250~∞**
Brightness Control **Yes**
Bright Source **Yes**
Protection Infrared **Yes**
Illuminator **10**
Immersion, m

Battery Type **AA×1**
Battery Life, h **20**
Dimensions, mm **110×97×90**
Weight, g **500**



Night Vision Mode



C4I-31 H

BINOCULAR NIGHT VISION GOGGLES

The C4I-31H Binocular Night Vision Goggles feature a modular design and standard interfaces. Adjustments can be made to the diopter and IPD. The lightweight housing is crafted from lightweight PEEK composite material, providing comfort and ease of wear. Various power supply modes are supported, along with integrated functions for IR illumination and high light protection.



**LIGHT WEIGHT
AND PORTABLE**



**HIGH-PERFORMANCE
OPTICS**



**MANUAL
GAIN**



**POWER-OFF BY
SIDE-TURNING
THE SUPPORT**



**20M WATER
RESISTANCE**

TECHNICAL DATA

Magnification, × Exit	1	Lens System, mm	27	Battery Type	CR123A×1 / AA×1
Pupil Distance, mm	25	Range of Focus, mm	250 ~∞	Battery Life, h	20
Adjustment, D I ²	-6~+2	Brightness Control	Yes	Dimensions, mm	108×106×83
Resolution, Lp/mm	64	Bright Source Protection	Yes	Weight, g	550
FOM	1800(Standard Gate Control)	Infrared Illuminator	Yes		
FOV, °	40±2	Immersion, m	20		



Night Vision Mode



C4I-C

CLIP-ON THERMAL IMAGER

The C4I-C is a clip on thermal imaging enhancement attachment designed for night vision and minimum illumination in extreme environmental conditions. It facilitates the rapid enhancement of the existing device, enabling clip-on fusion and multi-mode display. This greatly enhances users' nighttime battlefield perception, ensuring the prioritized recognition of potential adversaries and delivering a decisive tactical advantage.



LIGHTEST IN THE SERIES



MULTI-MODE DISPLAY



MULTI-SOURCE POWER SUPPLY



INSTALL AND PLAY

TECHNICAL DATA

Magnification, x	1
Resolution, Pixels	640×512
Pixel Pitch, μm	12
NETD, mK	25
Frame Rate, Hz	50
Lens System, mm	11.5 F1.0

FOV, °	30
Mode	outline, high lights
Immersion	IP67
Battery Type	CR123A×1 / 18650×1
Battery Life, h	6 (18650)

Dimensions, mm	85×65×43
Weight, g	95(w/o Battery)



Night Vision Mode



Highlight Mode



Outline Mode



C4I-C PRO

CLIP-ON THERMAL IMAGER

The C4I-C Pro is an enhancement attachment with a rapid upgrade to the night vision device and infrared thermaimaging ability. It is currently the world's lightest clip-on thermal imager with only 65g. The product is mounted externally using a bracket, allowing for quick disassembly and calibration-free use, enhancing the recognition capabilities of nightvision devices.



640×512 RESOLUTION



INTEGRATED SENSORS ENABLING VARIOUS AUTOMATIC CONTROLS



QUICK-FUSION IMAGING COMPATIBLE WITH CONVENTIONAL



THE LIGHTEST DEVICE IN THE WORLD WITH ONLY 65G



35° WIDE FOV



RICH EXPANSION ACCESSORIES FOR EFFECTIVE INFORMATION ENHANCEMENT



BLUETOOTH REMOTE CONTROL FOR FAST AND EFFICIENT OPERATION



DUAL POWER SEPARATION CABLE COMPATIBLE WITH IMAGE TUBE NIGHT VISION POWER SUPPLY SYSTEMS (Fischer - 3V)

TECHNICAL DATA

Detector Specifications

Detector, μm	640×512-12
Optics Specifications	
Aperture	F / 1.0
Magnification, x	1
FOV(H x V), °	35×30
Recognition Distance, m	275 (Target size: 1.7×0.5, P(n)=99%)

Image Mode And Functions

Image Modes	Highlight / Outline (Adjustable threshold)
Automatic Control	ABC , Automatic Shutdown , Auto Standby
Bluetooth Remote Control, G	2-4
Compass	Electronic Compass (degree)
Power Supply	1×CR123A Battery (Optional Battery Pack)
Power	
Battery Life(22°C)	3 h (1×CR123A), 10 h (Battery Pack)

Physical Specifications

Compatible	PVS-14 (RNVG, DTNVS, 1431), L3Harris BNVD (PVS-31A, GPNVG)
Minimum Fusion Distance, m	10
Weight, g	80(w/ Battery), 65(w/o Battery)
Dimension, mm	86(L)×65(W)×40(H)
Waterproof	1.5m for 0.5h



Outline Mode



Highlight Mode



C4I-FM

ENHANCED NIGHT VISION GOGGLE

The C4I-FM Monocular Fusion Night Vision Device integrates night vision and thermal imaging technologies, allowing users to quickly differentiate targets and identify potential threats. This enhances users' situational awareness and self-defense capabilities during operation.



MULTI-MODE FUSION



EXTENDED BATTERY LIFE



MANUAL GAIN



IP67

TECHNICAL DATA

Magnification, x	1	Pixel Pitch, μm	12	Battery Type	18650×2
Exit Pupil Distance, mm	20	Frame Rate, Hz	50	Battery Life, h	≥ 8 (Enhanced Display) / ≥ 100
Adjustment, D	-3~+2	Lens System, mm	F1.1,16	Dimensions, mm	(l ²) 106×74×87
l ² FOV, °	40	FOV, °	25.8×19.1	Weight, g	380
l ² Lens System, mm	25 F1.2	Resolution, Pixels	800×600		
Resolution, Pixels	640×512	Immersion	(OLED) IP67		



Highlight Mode



Outline Mode





C4I-FB

ENHANCED NIGHT VISION BINOCULAR GOGGLES

The C4I-FB harnesses next-generation night vision fusion technology by merging binocular stereoscopic imaging with thermal imaging technology. This integration allows users to swiftly discern targets and identify potential threats. This enhances users' situational awareness and self-defense capabilities during operation.



**BINOCULAR
3D VISION**



**RAPID TARGET
RECOGNITION**



**MULTI-MODE
FUSION**



**LIGHTWEIGHT
AND PORTABLE**

TECHNICAL DATA

Magnification, x	1	Pixel Pitch, μm	12	Battery Type	18650*2
Exit Pupil Distance, mm	20	Frame Rate, Hz	50	Battery Life, h	8(fusion)/60(I ²)
Adjustment, D	-3~+2	Lens System, mm	F1.1,16	Dimensions,mm	107*115*85
I ² FOV, °	40	FOV, °	25.8*19.1	Weight, g	575
I ² Lens System, mm	25 F1.2	Resolution, Pixels	800*600		
Resolution, Pixels	640*512	Immersion	(OLED) IP67		



Rapid Acquisition



Night Vision Enhancement Mode



C4I-ML

MULTI-FUNCTIONAL THERMAL MONOCULAR

The C4I-ML features 12µm thermal imaging technology and a high-sensitivity infrared detector, delivering exceptional outdoor night vision performance. The housing is formed from lightweight PEEK composite material, featuring a compact and lightweight design that is comfortable to wear, serving as a multifunctional product that can be used both handheld and head-mounted.



LIGHTEST IN THE SERIES



VARIOUS FUNCTIONS



HIGH - STRENGTH PEEK MATERIAL



IP67

TECHNICAL DATA

Magnification, x	1
Adjustment, D	-5 ~ +5
Resolution, Pixels	384x288/640x512
Pixel Pitch, µm	12
Frame Rate, Hz	50

FOV, °	16.3 × 12.3
Lens System, mm	16 F1.0/26.7 F1.1
Resolution, Pixels	1024x768

Battery Type	CR123A(3V)
Battery Life, h	5 (18650)
Dimensions, mm	68x92x42
Weight, g	200



Black Hot



Orange Hot



Rain Bow



White Hot



C4I-MU

MULTI-FUNCTIONAL THERMAL MONOCULAR

The C4I-MU Four-in-One Versatile Thermal Camera is equipped with a high-performance 640×512 infrared detector. It boasts a lightweight and compact design, along with an extended battery life. This product offers multiple functions, including handheld, head-mounted, Thermal sight, and clip-on applications, offering users a versatile experience with a single device serving multiple purposes.



FOUR-IN-ONE DEVICE



LIGHTWEIGHT AND PORTABLE



DUSTPROOF AND WATERPROOF



WITHSTANDING 1,000G IMPACT



ULTRA-LONG BATTERY LIFE



photo Video 64G



APP WIRELESS IMAGE TRANSMISSION

TECHNICAL DATA

Magnification, x	1	Frame Rate, Hz	50	Battery Type	18650×1
Adjustment, D	-5 ~ +2	Lens System, mm	26.7 F1.0	Battery Life, h	≤ 10
Resolution, Pixels	640×512	FOV, °	16.3×12.3	Dimensions, mm	113×70×48
Pixel Pitch, μm	12	Resolution, Pixels	1024×768(OLED)	Weight, g	270
NETD, mK	< 25	Immersion	IP67		



Black Hot



Green Hot



Iron



Outline



Red Hot



White Hot



C4I SERIES

C4I SERIES SIGHTS

C4I SERIES SIGHT

1 C4I-IS
INTELLIGENT FIRE
CONTROL SYSTEM



2 C4I-X
BALLISTIC
RANGEFINDER



1 C4I-CM
SERIES CLIP-ON
THERMAL SIGHT



2 C4I-CH
HEAVY-TYPE CLIP-ON
THERMAL SIGHT



1 C4I-TS
SERIES THERMAL
SIGHT



2 C4I-TR
THERMAL SIGHT





C4I-IS

INTELLIGENT FIRE CONTROL SYSTEM

C4I-IS intelligent fire control system adopts the world's leading AI system. It can quickly recognize, lock and track targets, and automatically calculate predicted shooting points, help users efficiently hit targets in complex battlefield environments. Furthermore, C4I-IS also supports features of one-shot ballistic trajectory zeroing and quick battery removal.



**INTELLIGENT
SEARCHING
AND TRACKING**



**BALLISTIC
CALCULATION**



**4K HD
SENSOR**



**ONE-SHOT BALLISTIC
TRAJECTORY ZEROING**

TECHNICAL DATA

Resolution Pixels	3840×2160
Pixel Pitch, μm	2
FOV, °	8.8×5
Focus, mm	50
Screen Pixels	1920×1080

System Magnification,x	3
Digital Zoom,x	1~4
Standard Interface Type	RS422,USB
Battery	18650×2
Battery Life,h	6

Weight(Without Battery),g	1100
Dimensions(L×W×H),mm	255×106×55



AI-Drone



AI-Human



AI-Target



Ballistic Calc



C4I-CM

SERIES CLIP-ON THERMAL SIGHT

C4I-CM is used in conjunction with a day sight and has a built-in high-precision rangefinder module. It supports various functions such as image transmission through Wi-Fi, video recording, and Bluetooth remote control. In addition, it is equipped with a digital magnetic compass to provide more accurate positioning. It is compatible with numerous types of guns such as rifles, sniper rifles, and shotguns.



**BALLISTIC
CALCULATION**



**LIGHTWEIGHT
AND PORTABLE**



**SUPPORT
IMAGE PANNING**



**SHUTTERLESS
SMOOTH IMAGING**



**BLUETOOTH
REMOTE
CONTROL**



**APP WIRELESS
IMAGE TRANSMISSION**

TECHNICAL DATA

C4I-CM330/CM635/CM650

Resolution Pixels	384×288(330)/640×512(635)/640×512(650)
Pixel Pitch μm	12
FOV.°	8.8×6.6(330)/12.5×9.4(635)/8.8×6.6(650)
Focus mm	30/35/50
Screen Pixels	1024×768
System Magnification	1×
Image Modes	White/Black/Green/Red/Iron
Standard Interface Type	RS232,USB,PAL,DC
Battery	CR123A×2
Battery Life,h	4

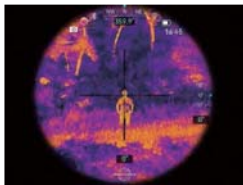
Weight(Without Battery)	505(330)/510(635)/555(650)
Dimensions(L×W×H),mm	141×79×73(330)/141×79×73(635)/ 147×79×73(650)

Laser Range Finder	
Type nm	905
Max Range, m	1200

Immersion	IP67
Recognition, m	1180(650)
Wifi/Photo/Video	✓
Storage	32G



Menu Interface



Home Screen-iron

Range Performance



The calculation of these indicators is based on the target detectability division method defined in the Johnson criterion. The humanoid target is defined as 1.7m high and 0.5m wide, and the vehicle target as 2.3m by 2.3m. The calculations assume standard environmental conditions and are based on the sensor specifications listed in the product. Actual performance may vary due to environmental factors, atmospheric conditions, or operational settings.



C4I-CH

HEAVY-TYPE CLIP-ON THERMAL SIGHT

C4I-CH is a thermal imaging sight suitable for heavy weapons. It works in conjunction with a day sight or independently. It is capable of wireless transmission and accurate range measurement, is waterproof and dustproof, and demonstrates excellent impact resistance.



WIRELESS TRANSMISSION



IP67



10000J IMPACT RESISTANCE



SUPPORT IMAGE PANNING



APP WIRELESS IMAGE TRANSMISSION

TECHNICAL DATA

C4I-CH675

Resolution Pixels	640×512
Pixel Pitch, μm	12
FOV, °	5.8×4.6
Focus, mm	75
Screen Pixels	800×600
System Magnification	1×
Image Modes	White/Black/Red/Rainbow/Red head
Retical Type	1
Standard Interface Type	RS232,PAL,DC

Battery	18650×2
Battery Life,h	12
Weight(Without Battery), g	1100
Dimensions (L×W×H), mm	144×95×136
Immersion	IP67
Recognition, m	1750
Wifi	✓
Photo/ Video(APP)	✓

Range Performance



Range Performance



The calculation of these indicators is based on the target detectability division method defined in the Johnson criterion. The humanoid target is defined as 1.7m high and 0.5m wide, and the vehicle target as 2.3m by 2.3m. The calculations assume standard environmental conditions and are based on the sensor specifications listed in the product. Actual performance may vary due to environmental factors, atmospheric conditions, or operational settings.



100m/6x



100m/10x



100m/20x




C4I-TS


SERIES THERMAL SIGHT

C4I-TS is equipped with a high-resolution thermal imaging module and has a built-in high-precision rangefinder module. It supports various functions such as image transmission through Wi-Fi, video recording, and digital magnetic compass. It is compatible with numerous types of guns such as rifles, sniper rifles, and shotguns




- 


1

BALLISTIC CALCULATION
- 

2


**SHUTTERLESS DESIGN
SMOOTH IMAGING**
- 

3

**QUICK-REMOVAL
LONG PICATINNY
RAIL**
- 


4

5

**FIVE TYPES OF
DEVICE DATA
STORAGE**
- 

5

6000J

**6000J IMPACT
RESISTANCE**
- 

6

**APP WIRELESS
IMAGE
TRANSMISSION**

TECHNICAL DATA

C4I-TS 335 / TS 635 / TS 650

Resolution Pixels	384×288(335)/640×512(635)/640×512(650)
Pixel Pitch, μm	12
FOV, °	7.5×5.7(335)/12.5×9.4(635)/8.8×6.6(650)
Focus, mm	35(335)/35(635)/50(650)
Screen Pixels	1024×768
System Magnification	3.4×(335)/2×(635)/2.9×(650)
Digital Zoom	1/2/4
Image Modes	White/Black/Green/Red/Iron
Retical Type	4
Standard Interface Type	RS232,USB,PAL,DC
Battery	CR123A×2
Battery Life,h	4

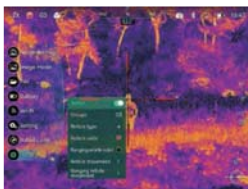
Weight(Without Battery),g	570(335)/570(635)/600(650)
Dimensions(L×W×H), mm	190×79×73(335)/190×79×73(635)/ 197×79×73(650)

Laser RangeFinder	
Type nm	905
Max Range, m	1200

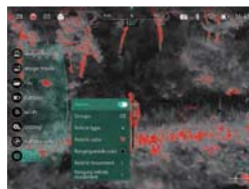
Immersion	IP67
Recognition, m	1180(650)
Wifi/Photo/ Video	✓
Storage	32G



Home Screen



Reticle



Laser Range Finding

Range Performance



The calculation of these indicators is based on the target detectability division method defined in the Johnson criterion. The humanoid target is defined as 1.7m high and 0.5m wide, and the vehicle target as 2.3m by 2.3m. The calculations assume standard environmental conditions and are based on the sensor specifications listed in the product. Actual performance may vary due to environmental factors, atmospheric conditions, or operational settings.



C4I-TR

THERMAL SIGHT

Featuring a compact size, light weight, low power consumption, long battery life, and 1,000m laser rangefinder function, G-TR can be used for observation and shooting aiming at night, in dim environments, darkness, harsh weather, or complex scenes. It is suitable for security enforcement, outdoor hunting, wilderness exploration, and other fields.



BALLISTIC CALCULATION	SHUTTERLESS DESIGN SMOOTH IMAGING	QUICK-REMOVAL LONG PICTINNY RAIL
6000J IMPACT RESISTANCE	APP WIRELESS IMAGE TRANSMISSION	LONG STANDBY TIME

TECHNICAL DATA

C4I-TR335/TR650

Resolution Pixels	384×288(335) / 640×512(650)
Pixel Pitch, μm	12
FOV, °	7.5×5.7(335) / 8.8×6.6(650)
Focus, mm	35(335) / 50(650)
Screen Pixels	1024×768
System Magnification	3.4x(335) / 2.9x(650)
Digital Zoom	1/2/4
Image Modes	White-heat / Black-heat / Red-heat / Rainbow
Reticle Type	4
Standard Interface Type	USB,PAL,DC
Battery	18650×1
Battery Life, h	7
Weight (Without Battery and Mount), g	600(335) / 670(650)
Dimensions(L×W×H), mm	214×95×66mm(335) / 227×95×66(650)

Laser Range Finder	
Type, nm	905
Max Range, m	1000
Immersion	IP67
Recognition,m	1180 (650)
Wi-Fi/Photo/	✓
Video Storage,G	32

Note : Table data measured in a laboratory environment



Home Screen



Laser Range Finder



Reticle

Range Performance



The calculation of these indicators is based on the target detectability division method defined in the Johnson criterion. The humanoid target is defined as 1.7m high and 0.5m wide, and the vehicle target as 2.3m by 2.3m. The calculations assume standard environmental conditions and are based on the sensor specifications listed in the product. Actual performance may vary due to environmental factors, atmospheric conditions, or operational settings.



C4I-X

BALLISTIC RANGEFINDER

The main functions of C4I-X include: single-point ranging, continuous ranging, ballistic calculation, laser indication, temperature, humidity and pressure measurement, OLED display, battery indicator, Bluetooth transmission, APP interconnection, and interconnection with Kestrel anemometer, and external communication serial port. Mainly used for outdoor use by individual soldiers.



BALLISTIC CALCULATION	SMALL SIZE AND LIGHT WEIGHT	LONG BATTERY LIFE
5000 TIMES MEASUREMENT	INFRARED AND GREEN LASER DUAL-SPECTRUM INDICATION	QUICK INSTALL
	APP WIRELESS DATA TRANSMISSION	

TECHNICAL DATA

C4I-X03k

Laser Type,nm	1535
Range Building,m	10~4000
Eye Safety	Class 1(indicating laser belongs to Class 3B)
Adjustable Range,°	±3
indication Distance,m	500(Night)
Accuracy,m	±1
Range freq,Hz	1
Detection	≥98%
Divergence	0.6mrad
Angle measuring range,°	Pitch angle: ±90(±1) Roll angle: 0-180(±1)
Temperature measuring range,	-40~+60 (±1)
Humidity measuring range C°	0-100% (±5%)

Altitude measuring range	0~5000m (±20m)
Power Supply,V	DC 2.2~5
Battery type	CR123A×1
Battery Endurance	5000 times
Display Size	1.3" OLED
Weight,g	230 (Battery included)
Dimensions, mm	76x56x47 (L×W×H)
Operating Temp, °C	-40~+55
Storage Temp,°C	-50~+65
IP rating	IP67
Connector	Uart (TTL_3.3V) to USB
Wireless transmission	Bluetooth 5.0 Mobile
Other	APP interconnection

Note: Table data measured in a laboratory environment



C4I SERIES

C4I Series Infrared Binoculars and Laser Rangefinder

MULTI-FUNCTION HAND HELD SERIES C4I SERIES INFRARED MULTI-FUNCTION BINOCULARS

- 1 COOLED MEDIUM-WAVE
C4I-BE PRO
COOLED MWIR
INFRARED
MULTI-FUNCTION BINOCULARS**



UNCOOLED LONG-WAVE

- 1 C4I-BHF
HD FUSION
BINOCULARS**
- 2 C4I-BHS
HD INTELLIGENCE
BINOCULARS**



VISIBLE LIGHT SWIR MWIR LWIR

- 1 C4I-X
SERIES HANDHELD LASER
RANGEFINDER**



- 2 C4I-BASE
PORTABLE
GROUND
STATION**





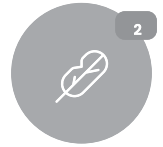
C4I-BHF

HD FUSION BINOCULARS

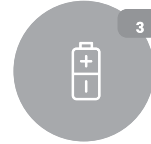
The C4I-BHF fulfills the need for all-weather observation with its extensive fusion field of view and excellent detection range. It has four optical channels, providing precise rangefinding and geolocation capabilities. This lightweight and portable product boasts exceptional thermal radiation and low light detection abilities, assisting users in preemptively identifying potential threats and enhancing their response efficiency.



**HIGH-DEFINITION
FUSION IMAGING**



**LIGHTWEIGHT
AND PORTABLE**



**ULTRA-LONG
BATTERY LIFE**



**PRECISE
POSITIONING**

TECHNICAL DATA

Thermal Channel

Resolution, Pixels 1024×768
Field of View, ° 15.5×11.6

Low Light Level Channel

Field of View, ° 17.4×13.1
Resolution pixels 1280×960

Laser Range Finder

Type(Eye Safe) ,nm 1535
Max Range, m ≥ 3000
Accuracy,m ±1

Digital Magnetic Compass

Azimuth Accuracy(RMS), ±1
Inclination Accuracy(RMS), ±1

Internal GPS Receiver

Accuracy(CEP), m 5

Laser Pointer

Wavelength,nm 850
Laser Class Class 1

Display

Resolution, Pixels 1024×768(OLED)

Power Supply

Battery Type 3×18650
Battery Life, h ≥ 8

Interfaces

Standard Interface Type DC/USB/RS232/PAL

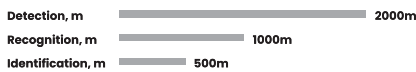
Physical

Dimensions(L×W×H), mm 201×182×94
Weight(Include Batteries), kg ≤ 1.4

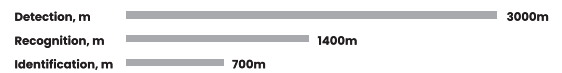
Environmental

Immersion IP67

Range Performance



Range Performance



The calculation of these indicators is based on the target detectability division method defined in the Johnson criterion. The humanoid target is defined as 1.7m high and 0.5m wide, and the vehicle target as 2.3m by 2.3m. The calculations assume standard environmental conditions and are based on the sensor specifications listed in the product. Actual performance may vary due to environmental factors, atmospheric conditions, or operational settings.



FU Mode



IR Mode



LLL Mode



C4I-BHS

HD INTELLIGENCE BINOCULARS

The C4I-BHS product offers a comprehensive suite of capabilities for situational awareness and decision-making, including target detection utilizing the "Cat Eye effect," infrared or visible light image recognition, laser rangefinding for coordinate acquisition, and laser pointing and guidance functions. The product excels in threat detection performance, allowing users to proactively defend against threats, seize the initiative in diverse complex environments, and effectively counter dangerous targets.



"CAT EYE EFFECT"
TARGET DETECTION

INTELLIGENT
RECOGNITION

DUAL-CHANNEL
HIGH-DEFINITION

PRECISE
POSITIONING

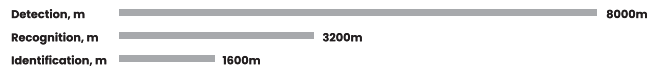
TECHNICAL DATA

Thermal Channel Resolution, Pixels 1280×960 Field of View, ° 8.8×6.6	Laser Range Finder Type(Eye Safe) ,nm 1535 Max Range, m ≥6000 Accuracy, m ±1	Laser Pointer Wavelength, nm 830 Laser Class Class 3B	Interfaces Standard Interface Type DC/USB/RS232/PAL/HDMI Wireless WIFI
Color Day Channel Field of View, ° 4.1×3.1 Resolution pixels 1440×1080	Digital Magnetic Compass Azimuth Accuracy(RMS), ° ±1 Inclination Accuracy(RMS), ° ±1	Display Resolution, Pixels 1440×1080(OLED)	Physical Dimensions(L×W×H), mm 266×278×131 Weight(Include Batteries), kg ≤3.9
Cat Eye Effect Detection Max. distance of sight(50mm),m 1400	Internal GPS Receiver Accuracy(CEP), m 5	Power Supply Battery Type 8×18650 Battery Life, h ≥8	Environmental Immersion IP67

Range Performance



Range Performance



The calculation of these indicators is based on the target detectability division method defined in the Johnson criterion. The humanoid target is defined as 1.7m high and 0.5m wide, and the vehicle target as 2.3m by 2.3m. The calculations assume standard environmental conditions and are based on the sensor specifications listed in the product. Actual performance may vary due to environmental factors, atmospheric conditions, or operational settings.



IR Mode



TV Mode



C4I-X

SERIES HANDHELD LASER RANGEFINDER

The C4I-X series laser rangefinders are meticulously crafted to meet operational demands, tackling challenges like complex operation and data inaccuracies often encountered with conventional measuring tools in combat settings. The product line integrates various functions such as long-range observation, ranging, angle measurement, height measurement, target positioning, and ballistic calculation, with support for Bluetooth connectivity and mobile app operation. Whether for reconnaissance tasks or tactical deployments, the C4I-X series provides efficient and accurate measurement solutions to assist users in gaining an advantage during operations.



LIGHTWEIGHT AND PORTABLE FOR ONE-HANDED OPERATION



BALLISTIC CALCULATION



APP



PRECISE POSITIONING

TECHNICAL DATA

Magnification	7x
Field of view,°	6
Wavelength, nm	1535
Laser	class 1
Class Max	3500/6000/100
Range, m	00

C4I-X03k/C4I-X06k/C4I-X10k

Accuracy, m	±1
Inclination	±0.5(Within ±75)
Accuracy(RMS), °	≥98%5000times
Detection Probability	GPS/Beidou/
Battery Life	GLONASS
Positioning Type	

Dimensions(L*W*H),mm	141x81x53
Weight(Include Batteries), g	430
Immersion	IP67
Advanced Features	Mobile APP&Ballistic Solution



Height & Horizontal Measurement



Two Target Distances & Angles



Ranging & Location



Scanning Measurement



Single Object Measurement



Multiple Object Measurement



C4I-BASE

PORTABLE GROUND STATION

When used together with multi-spectrum handheld products, it allows for remote control of laser rangefinder rotation at pitch and azimuth angles using a handle or an app. Users can simultaneously view the multi-spectrum handheld screen in real-time on a tablet, allowing them to accurately gather real-time information in complex environments and effectively tackle the challenges of monitoring distant targets.



**RAPID
INSTALLATION
AND
DEPLOYMENT**



**EXCELLENT
PERFORMANCE
IN
EXTREME
CONDITIONS**



**REMOTE
OMNIDIRECTIONAL
REAL-TIME
CONTROL**



**ACCURATE
AND
FAST
MOTION**



**AI Tracking &
Recognition
Function**

TECHNICAL DATA

Thermal Imager

Range of Motion	Pitch angle: +30° ~ -30°; azimuth angle: +150° ~ -150°
Position Accuracy	Pitch and azimuth angles: ±0.05
Battery	
Capacity, AH	10
Tablet	
Dimensions, "	10
Resolution	1920×1200
Handle	
Connection With Tablet	Wired USB connector
Cables	
Length, m	50

Tripod

Max. Height After Unfolding, mm	>1000
Backpack Specification, mm	532×432×208
Complete Set	
Weight, kg	15 (including the backpack weight)
Battery Life, h	>10

Matched Handheld Products

Model	C4I-BE PRO/C4I-BHF C4I-BHS/C4I-BE MINI
--------------	---



ACCESSORIES



BATTERY PACK

The battery pack is made of polymer material and is compatible with 18650 batteries. It supports up to 12 hours of fusion imaging and 60 hours of night vision. It features built-in GPS and GLONASS dual-mode positioning, ensuring accurate navigation and positioning to make the device more useful during night exploration.

Materials	Dimensions	Power	Connector	Weight	Compatibility	Location
High Density Polymer	75*85*35mm	2*18650	7Pin	105g	C4I-FM and C4I-FB	GLONASS&GPS Lat.-Lon.

BATTERY PACK

The C4I-31 battery pack is designed for use with night vision goggles on helmets. It holds two 18650 batteries to support a runtime of over 50 hours. It is compact and compatible with 18690 batteries. It is also easy to use and features a one-button activation function. Being waterproof, it can still work steadily in complex environments such as dusty, humid, and rainy conditions, ensuring the night vision goggles continue to function reliably.

Materials	Dimensions	Power	Connector	Weight	Compatibility
High Density Polymer	75*85*35mm	2*18650	7Pin	105g	C4I-31

BATTERY PACK

The battery pack is made of polymer material and is compatible with 18650 batteries. It provides a 4.2V output voltage and supports up to 12 hours of power supply for the C4I-C.

Materials	Dimensions	Power	Connector	Weight	Compatibility
Nylon injection molding structure	75*85*35mm	2*18650	7Pin	95g	C4I-C

C4I-FB, C4I-31, C4I-C battery pack supporting cables

The Y splitter cable powers C4I-31 and C4I-C simultaneously, increasing overall runtime. The spring wire design allows the C4I-31 to be used in various orientations (upright and sideways) and is compatible with C4I-31 and C4I-C battery holders.

Suitable for all products in the C4I series. It is lightweight and stable, allowing for quick connection to night vision goggles without the need for additional tools. It can be adjusted forwards and backwards, as well as in the pitch direction. It allows for easy swapping between the left and right eye by using accessories that connect to C4I series monocular night vision goggles.

Material	Weight	Compatibility
Aluminum	165g	All C4I series night vision goggles

CABLE

CABLE

HELMET MOUNT





C4I SERIES

C4I SERIES VEHICLE-MOUNTED THERMAL CAMERA

VEHICLE-MOUNTED THERMAL CAMERA

C4I SERIES

1 C4I B

VEHICLE-MOUNTED THERMAL CAMERA



2 C4I BF

DUAL-SPECTRUM VEHICLE-MOUNTED
THERMAL CAMERA



3 C4I J

STITCHING VEHICLE-MOUNTED
THERMAL CAMERA



4 C4I - 6CH

AI BOX



5 C4I DISPLAY

VEHICLE-MOUNTED MONITOR





C4I B

VEHICLE-MOUNTED THERMAL CAMERA

The C4I B vehicle-mounted thermal camera features military-grade quality, HD image output, and wide FOV observation. This device is durable enough to withstand extremely harsh conditions when used on special vehicles. It provides stable and reliable environmental images, making driving safer.



SHUTTERLESS
CORRECTION
AVOID IMAGE
FREEZE



IP67



WIDE FOV
90°X65°/58°
X48°



LOW LATENCY
SYSTEM DELAY
60MS

TECHNICAL DATA

C4I-B55 & C4I-B90

Sensor Type	VOx uncooled infrared focal plane detector
Resolution	640×512
Pixel, μm	12
Focal Length	6.9m/F1.0 & 4.2mm/ F1.2
FOV, °	58×48&91×76
Frame Rate	50Hz
Recognition Distance,m (Vehicle Target/Human Target)	200/150&120/100
Scene-Based Correction Latency,ms	Supported 60

Dimensions,mm	≤ 88×65×112
Weight,kg	≤1
Ingress Protection	IP67
Shock,g	40
Video Interface	PAL/SDI
Communication Interface	RS232
Power Supply,V	9~36
Power Consumption,W	≤2



C4I BF

DUAL-SPECTRUM VEHICLE-MOUNTED THERMAL CAMERA

The C4I-BF dual-spectrum vehicle-mounted thermal camera uses a military-grade uncooled infrared detector and a visible light camera with minimum illumination. It supports dual-spectrum fusion, multiple palettes, and a wide FOV observation range. The product is capable of quickly identifying potential hazard hotspots, locating concealed personnel, and timely discerning road hazards. It is widely used in driving assistance of special vehicles to improve driving safety.



1
**MILITARY- GRADE
QUALITY**

2
**SHUTTERLESS
CORRECTION**

3
IP67

4
HD IMAGE

5
**DUAL- SPECTRUM
FUSION**

TECHNICAL DATA

C4I-BF55 & C4I-BF90

Thermal

Type	VOx uncooled infrared focal plane detector
Resolution	640×512
Pixel Pitch,μm	12
Focus Length	6.9m/F1.0&5.3mm/F1.0
FOV,° Frame	58 ×48 & 90×65
Rate,HZ	50

Minimum Illumination

Type	Minimum Illumination
Resolution	1920×1080
Pixel Pitch,μm	4
Sensitivity	0.001Lux@IR F1.0@25Hz
Focus Length	8mm/ F1.0&5.1mm/F1.0
FOV,°	55 ×31 & 85 ×45

Fusion FOV, °	55 ×30 & 85 ×45
Recognition Distance (Vehicle Target /Human Target) m	200/150 & 120/100
Image Mode	Supports switching between visible light, infrared, and fusion mode

Scene-Based Correction

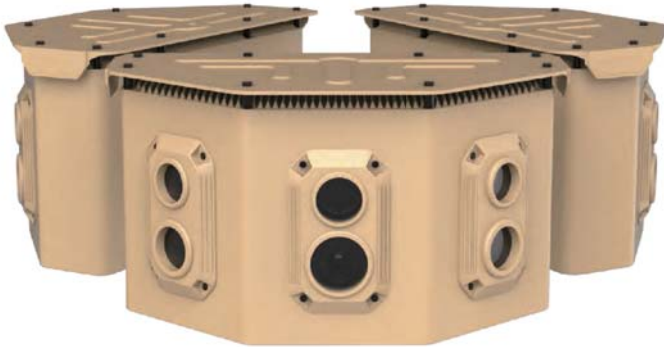
Latency,ms	60
Dimensions,mm	≤ 116×66×132
Weight,kg	≤ 1.5
Ingress Protection	IP67
Shock,g	40
Video Interface	PAL/SDI
Communication Interface	RS232
Power Supply,V	9-36
Power Consumption,W	≤6



C4I J

STITCHING VEHICLE-MOUNTED THERMAL CAMERA

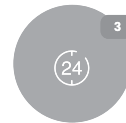
The C4I J stitching vehicle-mounted thermal camera uses real-time seamless image stitch technology and is equipped with infrared and visible light sensors to meet the needs of multi-spectral and wide-angle observation. This product can be widely used in fields such as driving assistance, safety monitoring, and urban patrol.



120°+ WIDE FOV



DUAL-SPECTRUM SEAMLESS IMAGE STITCHING



ALL-WEATHER



ULTRA-WIDE FOV



IP67

TECHNICAL DATA

Infrared

Sensor Type	VOx uncooled infrared focal plane detector
Resolution	640×512
Pixel Pitch,μm	12
FOV(fusion),°	130 ×40
Recognition Distance (Vehicle/ Person),m	260/200

Visible Light

Sensor Type	CMOS
Resolution	1920×1080
Pixel Pitch,μm	2.9
FOV(fusion),°	130 ×29
Recognition Distance (Vehicle/Person),m	400/300

Frame Rate,Hz	25
Scene-Based Correction	Supported
Dimensions,mm	260×130×120
Weight,kg	<3.9
Ingress Protection	IP67
Shock,g	40
Video Interface	SDI
Communication Interface	RS422
Power Supply,VDC	18~36
Power Consumption,W	≤20



C4I-6CH AI BOX



The C4I-6CH AI BOX is a crucial hub for 360° vehicle perception. It supports the input of up to six Spike series thermal imaging cameras and provides AI intelligent recognition for two of them. The integrated video footage will be played on a single monitor, eliminating the hassle of having too many monitors. The system offers a computing power of 12 TOPS and can achieve functions such as target detection, classification, depth distance perception, and collision warning.

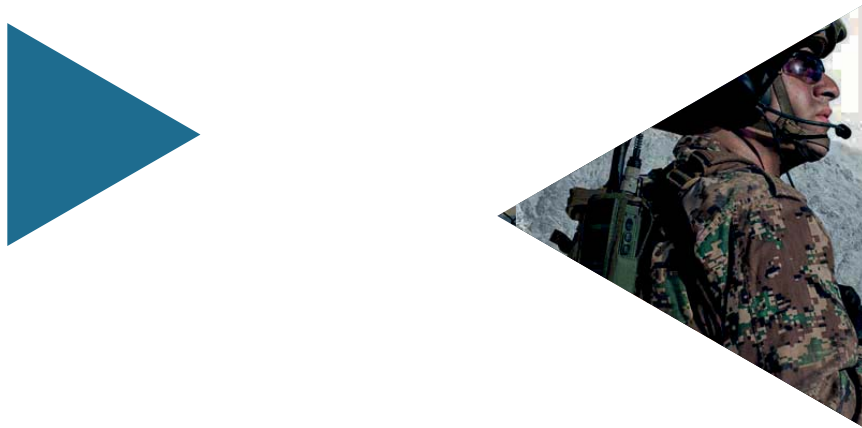
Computing Power	12 TOPS(3SOC)
CPU	4-core CortexA53(3SOC)
Power Supply	DC 24V
Power Consumption, W	≤20
Intelligent Recognition	Target detection, classification, depth and distance perception, and collision warning
Video Interface	PAL
Communication Interface	RS232
Ingress Protection	IP67
Dimensions,mm	W:135, L:165, H:37
Weight,g	≤950g

C4I DISPLAY VEHICLE-MOUNTED MONITOR



The C4I DISPLAY is a monitor specifically designed for C4I series products. It features an 8-inch screen, supports PAL/SDI format videos, has the functions of taking photos and recording videos, and also supports the input and simultaneous display of two channels of video signals. With its functionality and reliability, the C4I DISPLAY has become an excellent accessory for C4I series products.

	TZD084	BD10I2	BD12I4
Size,"	8	10	12.1
Type	TFT-LCD	TFT-LCD	TFT-LCD
Resolution	800×600(PAL) 280×720(SDI)	1280×800(SDI)	1280×800(SDI)
Quantity of Video Interfaces	2	2	4
Power Supply,V	18-32	18-32	18-32
Ingress Protection	IP54	IP54	IP54
Shock,g	40	40	40
Weight,kg	≤3	≤4	≤4.5
Power Consumption,W	≤20	≤20	≤20



LEARN MORE: c4icommunication.com
FOR MORE INFORMATION: contact@c4icommunication.com or +1 (302)9811340